



Roll It Open or Closed

The Tarping System for Today's Transportation Industry™

Excellent quality, dependable, fast, attractive and economical to own make EZ-LOC Roll-Up Tarp an asset to your farm operation. Hand made in the heartland of America, we use galvanized hardware and powder coated parts to ensure years of service.

Protecting your commodity every step of the way, we cover Grain Carts, Grain Trucks, Fertilizer Tenders and Hopper Trailers. EZ-LOC Roll-Up Tarp was built with today's agricultural industry in mind.

IN STOCK



THE RUST STOPS HERE!

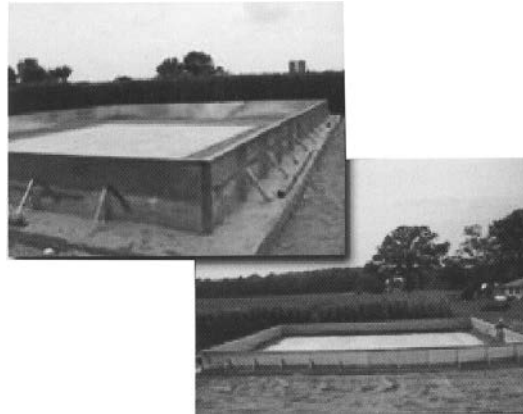
OVER RUST™ is a unique chemical process that stops rust dead in its tracks! It is the only effective way to totally eliminate destructive rust.

OVER RUST eliminates the need for sandblasting, grinding, disassembly, reassembly and the prolonged down-time that is associated with conventional methods of rust treatment.

OVER RUST is easy to use, and its application requires no sophisticated equipment. OVER RUST is applied directly onto the rust. Then, as it cures, it bonds to the metal and forms a tough, black polymer type coating that has actually permeated the rust and etched itself directly into the metal. This finished product is paint-ready and guaranteed to offer you years of trouble-free protection.



PLIA CONTAINMENT SYSTEMS



Fabricators of Synthetic Liners for:

- Liquid fertilizers
- Fuels
- Chemicals
- Water Containment



PLIA-PAD
Instant Containment
Anytime, Anywhere



PLIA-DIKE
The Superior Alternative
to Concrete
Versatile Liquid Containment



PLIA-TANK
Covered Liquid Storage



PLIA-LINER
A Solution for
New or Existing Dikes



(800) 565-4716 (517) 625-4716

fertilizer dealer supply

10762 Bennett Drive • Morrice, MI 48857

www.fertilizerdealer.com



AgDirect.

Chandler Equipment Co.
 Gainesville, Georgia
 Quality Fertilizer Equipment
35 PT-FTLH EXW



Hopper Construction:

Available in three types of material: Mild Steel, 409
 Stainless Steel & 304 Stainless Steel

Conveyor Specs:

24" - 1"x1" Mesh Type - 304 Stainless Steel Chain

Spread Patterns:

Fertilizer up to 70', Lime up to 50'
Tandem Axle Walking Beam Suspension

Chandler Equipment Co.
PULL-TYPE
LITTER AND SHAVING SPREADERS



**Single Axle
 or
 Tandem Axle**

**PTO Mechanical
 Drive
 or
 Hydraulic Drive**

**Variable Rate
 Application Control
 Systems and Swath
 Guidance Available**



**Leading the industry for over 40 Years as the #1
 manufacturer of Poultry Litter Spreaders**

Chandler Equipment Co.
Fertilizer and Lime Spreaders

Chandler
 PTO drive
 fertilizer
 spreader,
 6-ton,
 8" chain.



Chandler
 8-ton
 fertilizer/
 lime
 spreader.



**CDS-John Blue 3" wet seal
 cast iron pump,**

Max. 400 gpm, 13 hp, elec. start
 Honda, 2-yr. warranty, in stock.

(800) 565-4716 (517) 625-4716

fertilizer dealer supply



10762 Bennett Drive • Morrice, MI 48857

www.fertilizerdealer.com



AgDirect.