

**26.5 Acres +/- of Vacant Farmland  
For Sale  
Saginaw, MI (SAGINAW CO)  
@ www.BidNow.us**



We are currently taking offers on this Conventional Listing through Albrecht Realty. Call / See Website for more info. **Motivated seller, Call Now with your offer!**

**Location:** Located in Section 25 of Spaulding Township, Saginaw County, MI. **Directions:** Approx. 3 miles South of Saginaw City Limits on East Road (M-13) and just south of W. Moore Road. **Address:** 6165 East Road (M-13), Saginaw, MI.

**Legal Description:** Property ID# 25-11-4-25-2002-00 SEV: \$109,000. This includes the homestead which will be split off on approx. 1.86 Ac. after we have an accepted offer. **Note:** The homestead will be coming up for sale in the near future. Call for details.

Visit Website for more info Including: Soil Map, FSA Tillable Acre Map, Title Work, Property Tax Info, etc.

**Auctioneer's Note:** Please call our office if you need assistance bidding. We can place bids for you 'live' over the phone on auction night as the bidding is ending w/ prior arrangements. Register online for your permanent bidder's number or call our office to register! Call our office and ask for Dave for details on how the bidding will take place online!

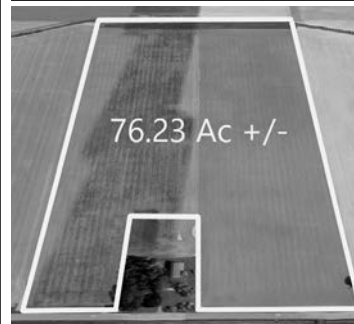
**Owner: Marcina LaFraniere  
(989) 823-2550 – Ask for Dave or Drew**



**Albrecht Realty**  
875 State Rd., Vassar, MI  
**989.823.2550**  
[www.BidNow.us](http://www.BidNow.us)



**ONLINE LAND AUCTION  
76.23 Acres of Farmland  
Sebewaing, MI (HURON CO)  
@ www.BidNow.us**



**Bidding Begins Closing Tuesday,  
November 10<sup>th</sup> @ 5 P.M.**

**Approx. 76.23 Acres** of Prime Tiled Vacant Farmland. Prime Kilmanagh Loam Soil! The original farmstead has previously been split off on 3.77 Acres with 297' frontage x 553' Deep.

**Land is located** in Section 11 of Sebewaing Twp, Huron Co, MI **Directions:** 3 Miles East of Sebewaing, MI on Sebewaing Rd. **Address:** 10206 Sebewaing Rd., Sebewaing, MI (This is the address of the original farmstead)

**Legal Description:** The W 1/2 of SE 1/4 of Section 11 (with the exception of the farmstead) in Sebewaing Twp, Huron Co., MI. Property ID# 3223-011-007-20 SEV: 306,400

Visit Website for more info Including: Soil Map, FSA Tillable Acre Map, Title Work, Property Tax Info, etc.

**Auctioneer's Note:** Please call our office if you need assistance bidding. We can place bids for you 'live' over the phone on auction night as the bidding is ending w/ prior arrangements. Register online for your permanent bidder's number or call our office to register! Call our office and ask for Dave for details on how the bidding will take place online!

**Owners: David Volz and Joanne Brooks**

Call Daven Albrecht @ (989) 823-8835 for more Info.



**Albrecht Realty**  
875 State Rd., Vassar, MI  
**989.823.2550**  
[www.BidNow.us](http://www.BidNow.us)



**Farm & Construction Equipment  
Statewide Online Consignment Auction  
@ www.BidNow.us**

**Bidding Begins Closing  
Wednesday, November 11th @ 7pm!**

Visit our website to view updated list of equipment and contact telephone numbers for inspection! Call the office if you need assistance placing your bid. We can place bids for you!



**NOW ACCEPTING CONSIGNMENTS FOR OUR DECEMBER  
Statewide Farm & Construction Equipment Online Auction  
@ www.BidNow.us**

- Leave equipment at your location – eliminate transportation costs!
- No commission charged to the seller! (Low entry fee.)
- Email photos and descriptions to us or call us to take the photos for a small fee.
- Give us a try and find out why thousands across Michigan and beyond are using our site to buy and sell their equipment!

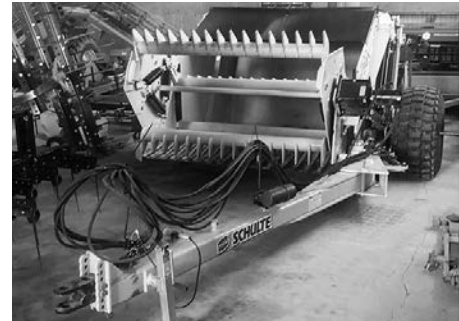


**Albrecht Auction Service**  
Vassar, MI • (989) 823-8835  
[www.BidNow.us](http://www.BidNow.us)

**Dave & Janis Eftman and Ron Elbing  
Farm Equipment Online Auction  
Filion, MI (HURON CO)  
@ [www.BidNow.us](http://www.BidNow.us)**

**BIDDING BEGINS CLOSING TUESDAY, DECEMBER 15th**

Due to retirement, Dave & Janis Eftman and Ron Elbing are selling equipment by Absolute Auction!



**TRACTORS:** 2013 Case IH 260 Magnum Tractor, bought new 4/14, 1650 hrs.- still in use, heavy front axel, 59 gal. hyd pump, 4 remotes, power beyond, motor return, 10 front weights & 1000# rear, quick hitch, 1000 only PTO, performance monitor, many more options; 1992 Case IH 7110 2WD Tractor, 6340 hrs.- still in use, 3 remotes, motor return, dual PTO, LED lights in front, 14.9x46 tires; 1988 Case IH 9110 4WD Tractor, 6517 hrs., eng rebuilt at 4047 hrs w/ paperwork, turbo and injection pump in 2014, 1000 PTO, have 3 Pt (not currently on tractor), 4 remotes, 12 sp power shift, 18.4x38 tires, all tires at 95%; 1977 Ford 8700 Tractor, 8016 hrs.- still in use, 3 remotes, quick hitch, air works, 9700 turbo and injectors, new injection pump 2017, 14.9x46 inside and 16.9x46 duals, one owner; Bush Hog 2846 QT Loader universal fit quick tach w/ quick tach bucket, selling separately from Ford 8700 Tractor; 1974 International 966 Tractor, 4333 Hrs., 16.9x38 tires w/ duals, one owner;

**COMBINES & HEADS:** 1995 Case IH 2166 Axial Flow Combine, 4WD, 4438/3490 Hours, AFX rotor, trap, chopper, Maurer extension, 30.5x32 radial tires 90% and rear 90%, 3 sets concaves, concaves and grates new in 2018, Over \$18,000 in repairs (parts and labor) for 2020 w/ paperwork! 1987 Case IH 1640 Axial Flow Combine, 4827 hrs., complete new motor at 4493 hrs. w/ paperwork, 24.5x32 radials at 90%, AFX rotor, trap, TSR chopper, oil bath unloading gear box, chaff spreader, good cage and cone, all augers and elevator chains replaced, very good condition; Case IH 1020 20' Flex Head w/Crary wind system, new floor in 2018 and SCH roller knife; Case IH 1020 17 1/2' flex head w/ Crary wind system, late model Case knife, very good condition; Case IH 1063 6-Row Corn Head Total Rebuild 400 acres ago, updated snapping rolls with water pump bearings; (3) Header Carts;

**TILLAGE & ROCK EQUIPMENT:** Case IH Tiger Mate 200 28 1/2' Field Cultivator; Landoll 2110 Disc Chisel; Landoll 24' Field Cultivator w/ discs on front and spike levelers on back; DMI 24' Crumbler w/ large 7/8 rods; Deutz Allis 1500 7-Shank Ripper; Case IH Crumbler; Smith 31' Roller; Yetter 3530 30' Rotary Hoe; Brillion Stalk Chopper; Schulte Titan 5000 Rock Picker w/ less than 30 acres use, like new; 14' Stone Rake, rebuilt in 2020 w/ new PTO shafts, slip clutch, bearings, sprockets, driven shaft in rake, hard surfacing on teeth, make unknown;

**PLANTING & SPRAY EQUIPMENT:** White 6122 12-Row, 30" Planter; JD Late 750 Model- 15' No Till Drill, Excellent; KB Kilbros Seed Vegan 360, Like New; Schaber 1000 Gallon Sprayer w/60' Boom; Farm King 1410 Applicator, Like New; 60' 3 pt. Spray Boom; (2) 180 Gal. Ag Chem Spray Tanks;

**CARTS & WAGON:** Unverferth 5225 500 Bushel Grain Cart; Parker 2600 Wagon w/Auger;

**OTHER:** Dual Wheel Extensions for 22" row 10-bolt; 18.4-R38 Goodyear Tire; 100 Gal. Fuel Tank; **PLUS ADDITIONAL ITEMS NOT LISTED!**

**Location:** Items are Located at 3807 Thomas Rd., Filion, MI 48432 (Huron Co.) **Directions:** Take M-53/N. Van Dyke Rd to Filion Rd., Then West 2 Miles to Thomas Rd., Then North 1/2 Mile.

**Preview:** This is an Online Auction with Live Preview! Please visit website for information on Preview Dates and Times.

**Contact Owner: Dave Eftman with equipment questions – (989) 975-6562**



**Albrecht Auction Service  
Vassar, MI • (989) 823-8835  
[www.BidNow.us](http://www.BidNow.us)**

